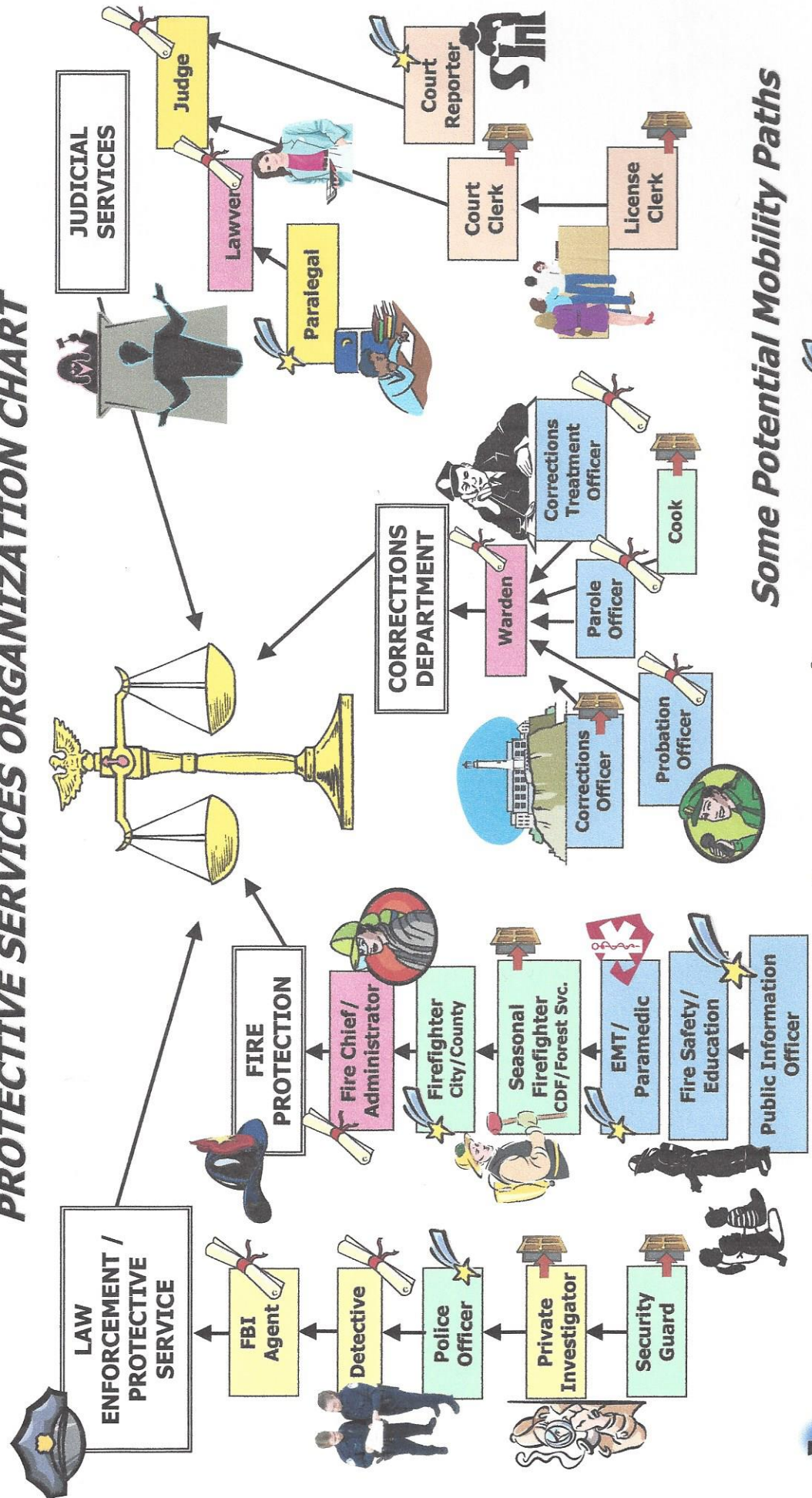


PROTECTIVE SERVICES ORGANIZATION CHART

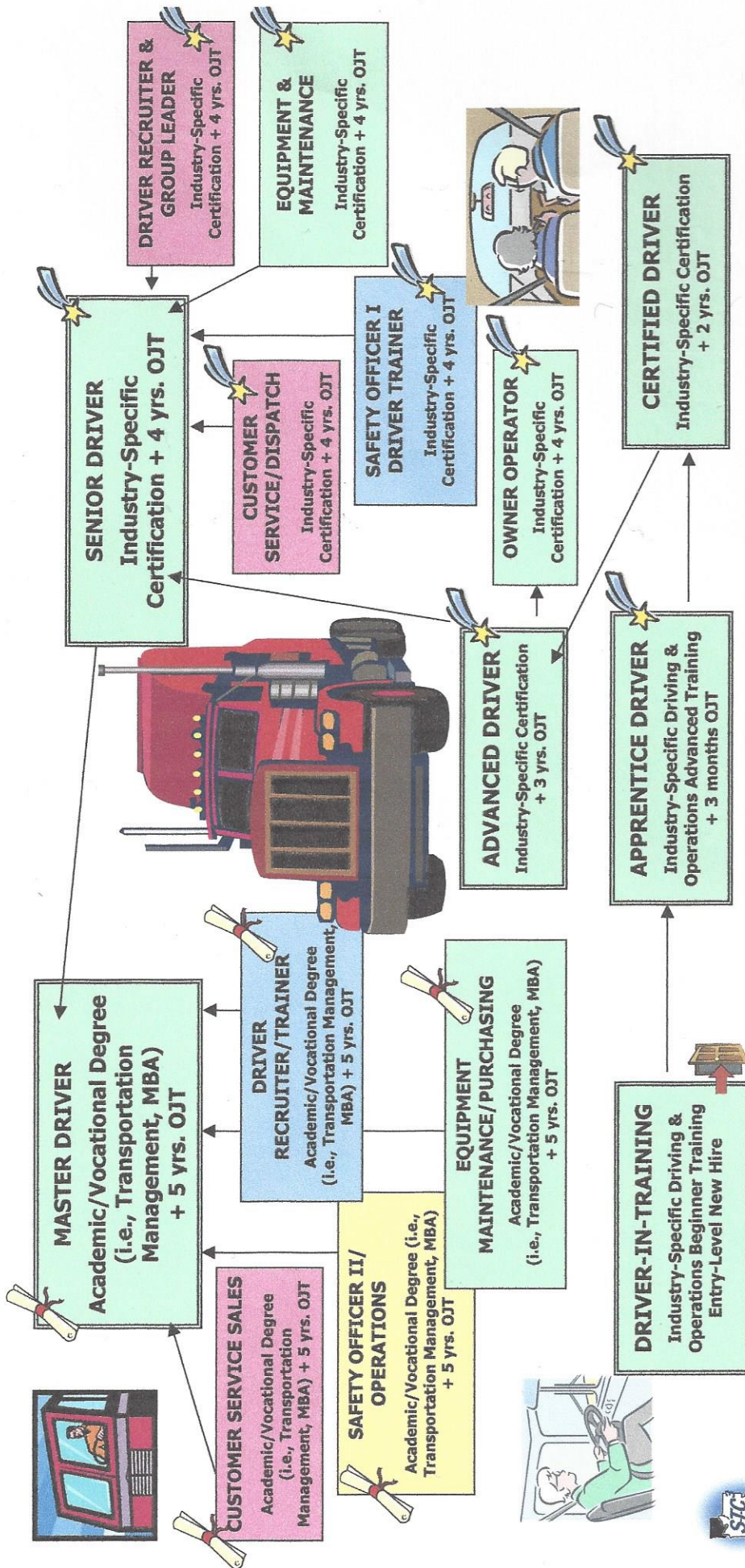


Some Potential Mobility Paths

= Career/Technical Training/ Certification beyond High School
 = 4 or more years College/Univ. Degree
 = Entry Level

Shasta Twenty-first Century Career Connections
 Career Interest Color Codes: **R I A S E C**

TRUCKING OCCUPATIONS MOBILITY PATHS

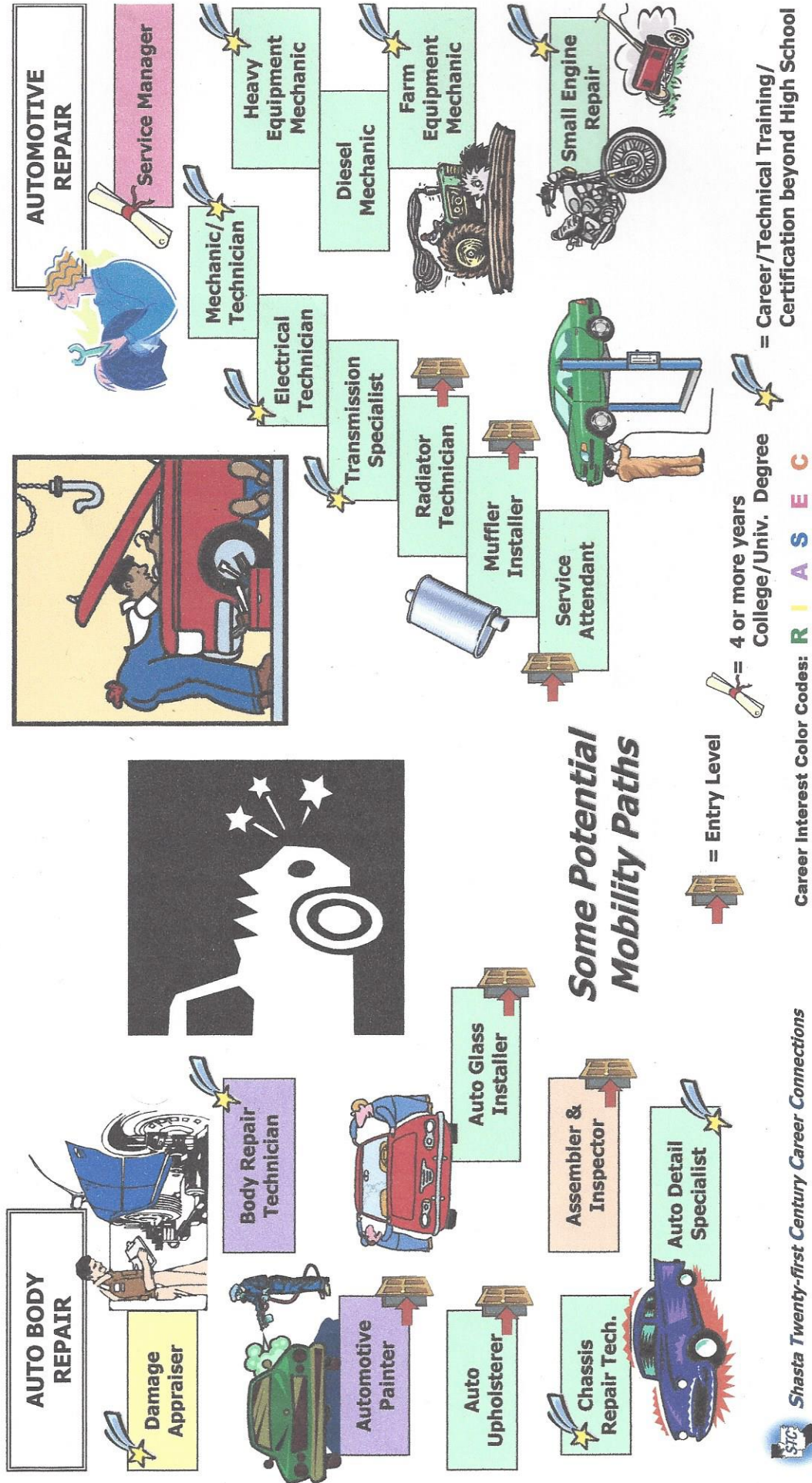


Career Interest Color Codes: **R I A S E C**

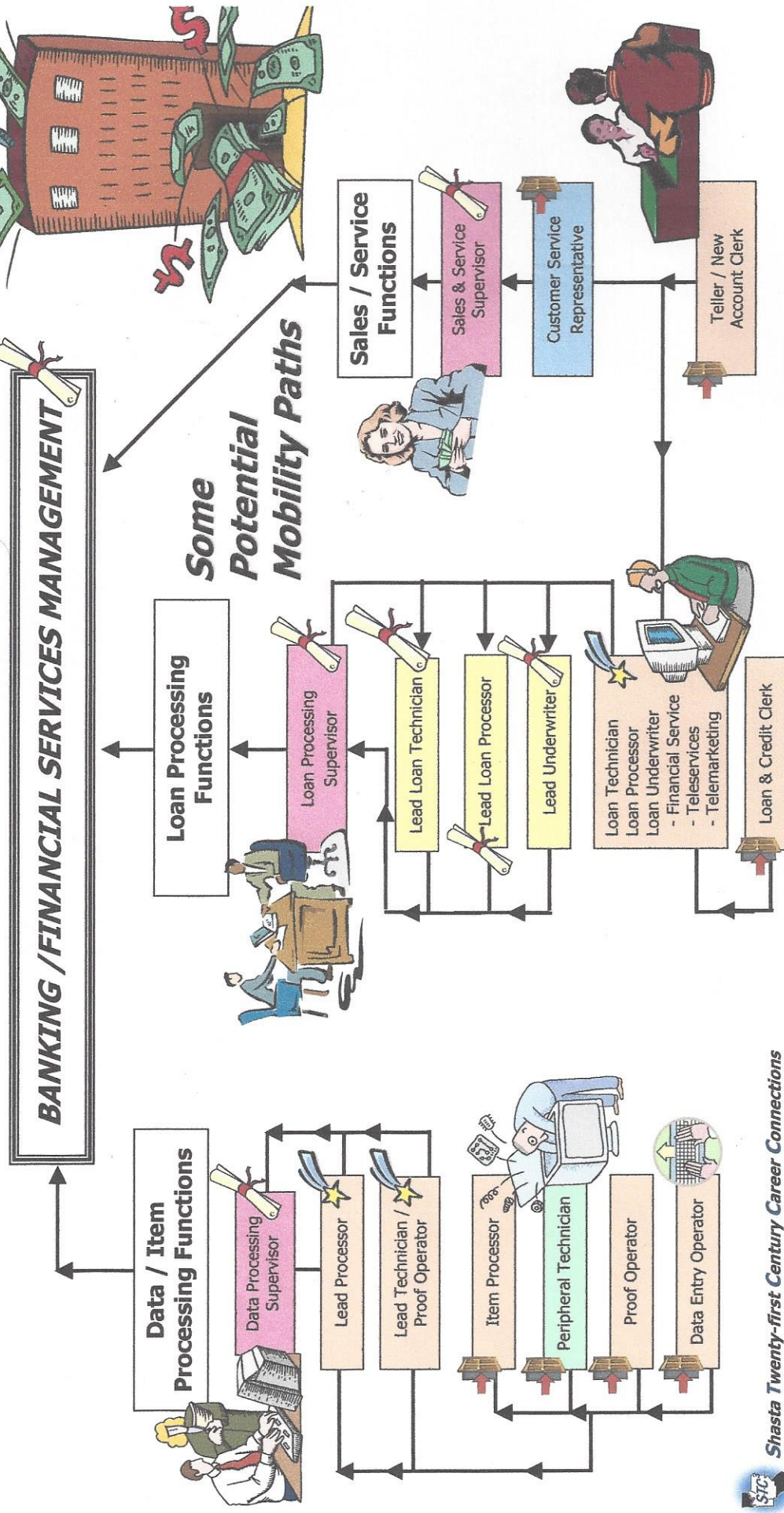
= Entry Level
 = 4 or more years College/Univ. Degree
 = Career/Technical Training/Certification beyond High School



AUTO BODY & REPAIR ORGANIZATION CHART



BANKING / FINANCIAL SERVICES ORGANIZATION CHART



Shasta Twenty-first Century Career Connections

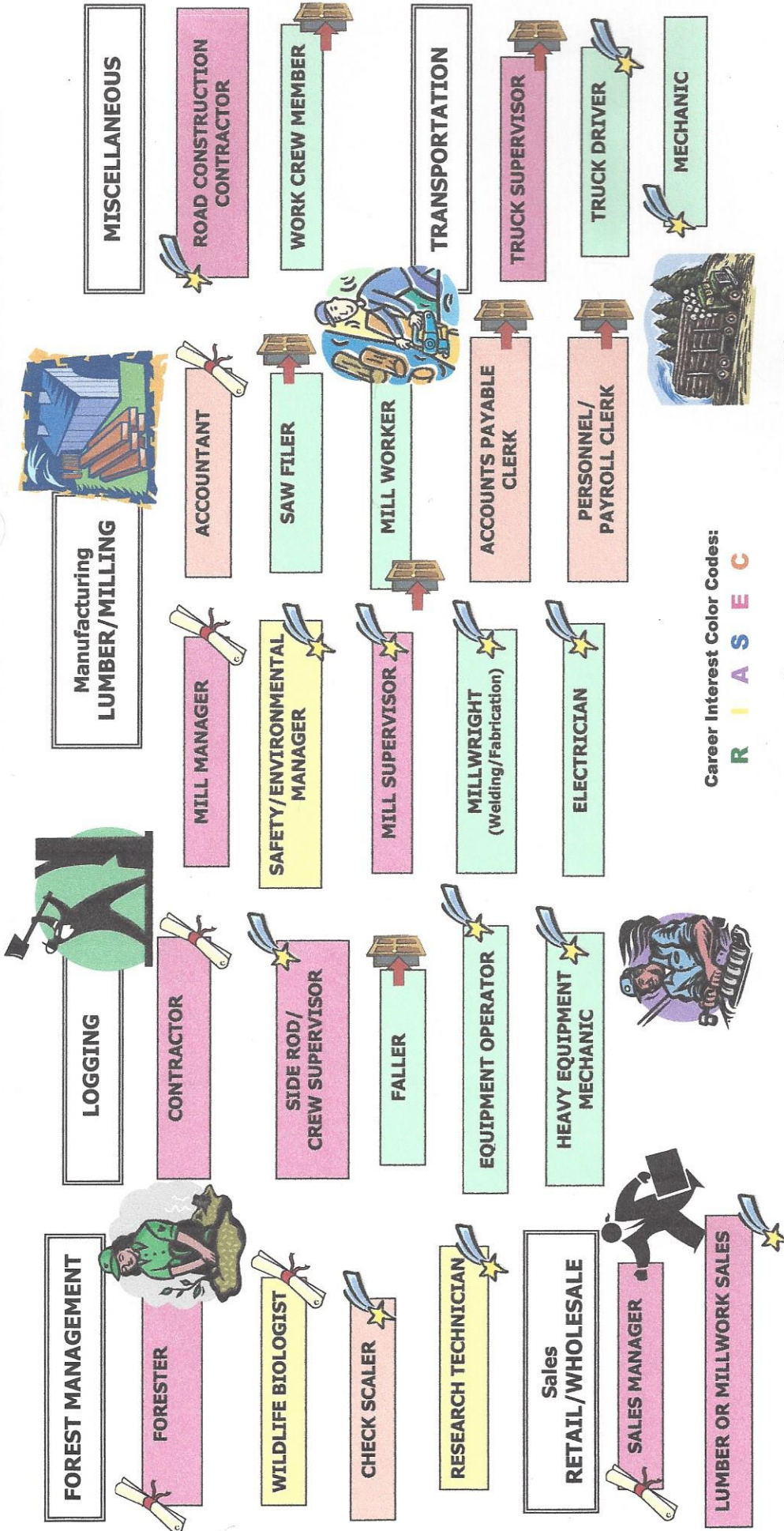
Career Interest Color Codes: **R** | **A** | **S** | **E** | **C**

= Entry Level

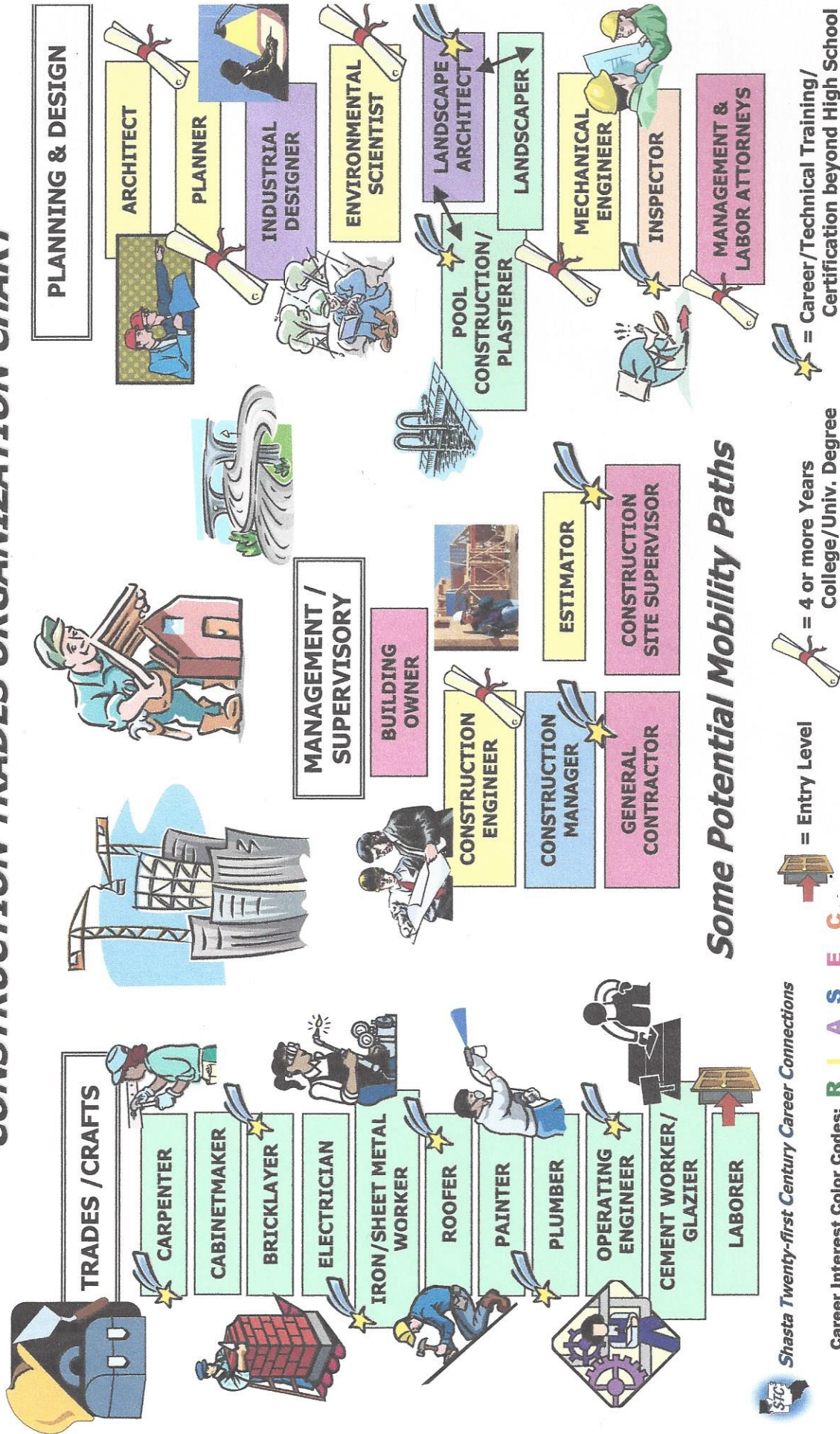
= 4 or more years College/Univ. Degree

= Career/Technical Training/ Certification beyond High School

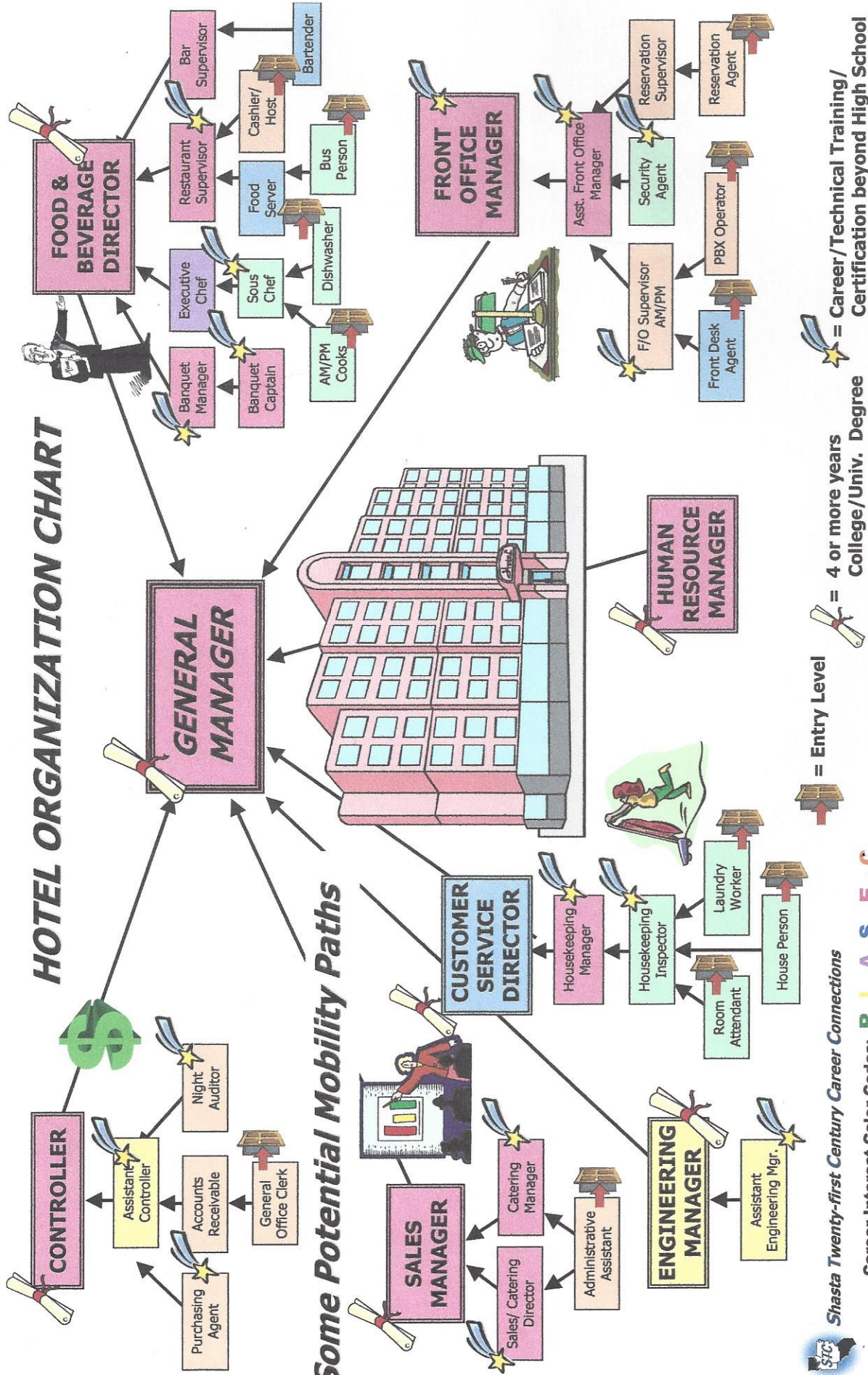
FOREST PRODUCTS INDUSTRY OCCUPATIONS MOBILITY PATHS



CONSTRUCTION TRADES ORGANIZATION CHART



HOTEL ORGANIZATION CHART



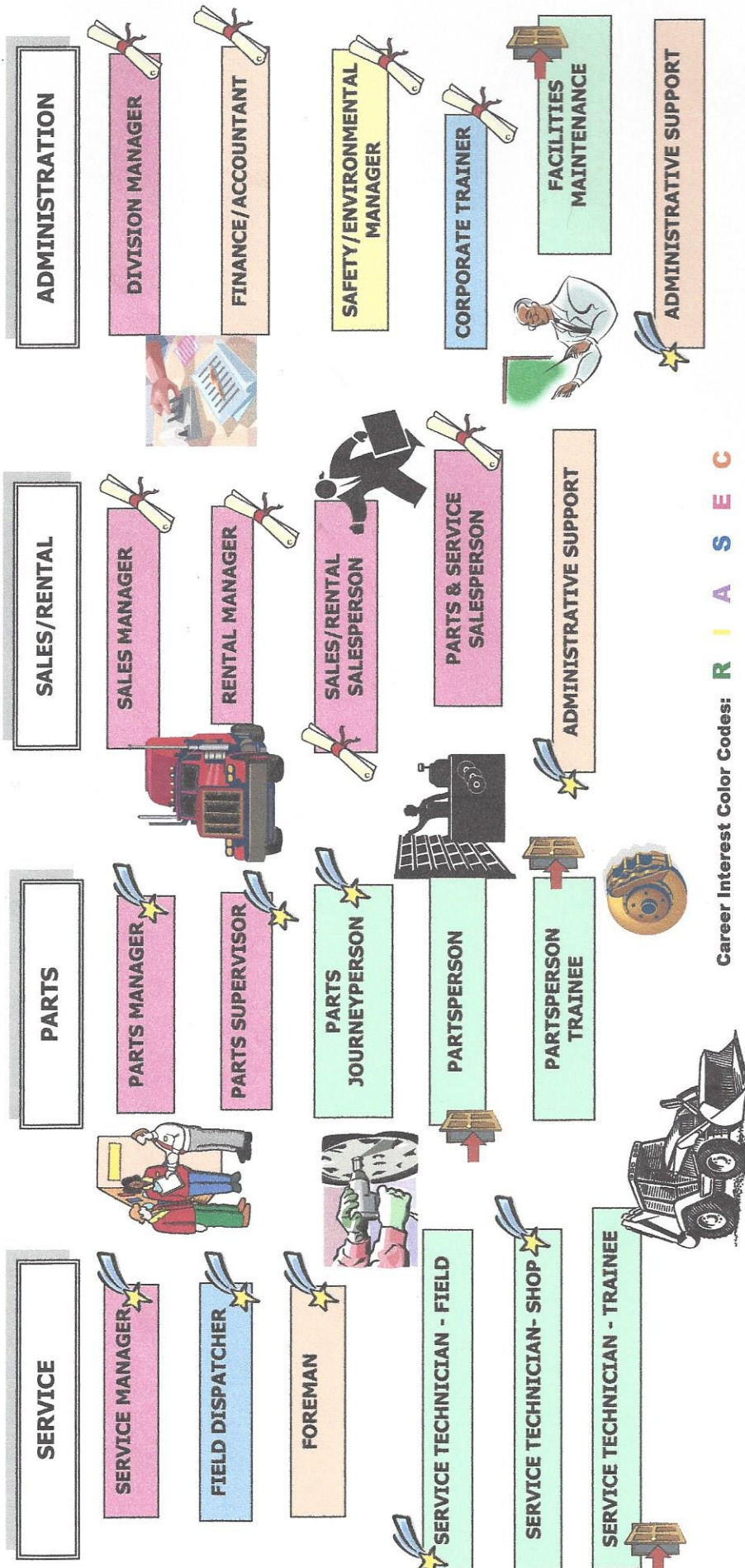
Some Potential Mobility Paths

= Entry Level
 = 4 or more years College/Univ. Degree

= Career/Technical Training/Certification beyond High School

Shasta Twenty-first Century Career Connections
 Career Interest Color Codes: **R** | **A** | **S** | **E** | **C**

HEAVY EQUIPMENT SALES & SERVICE OCCUPATIONS MOBILITY PATHS



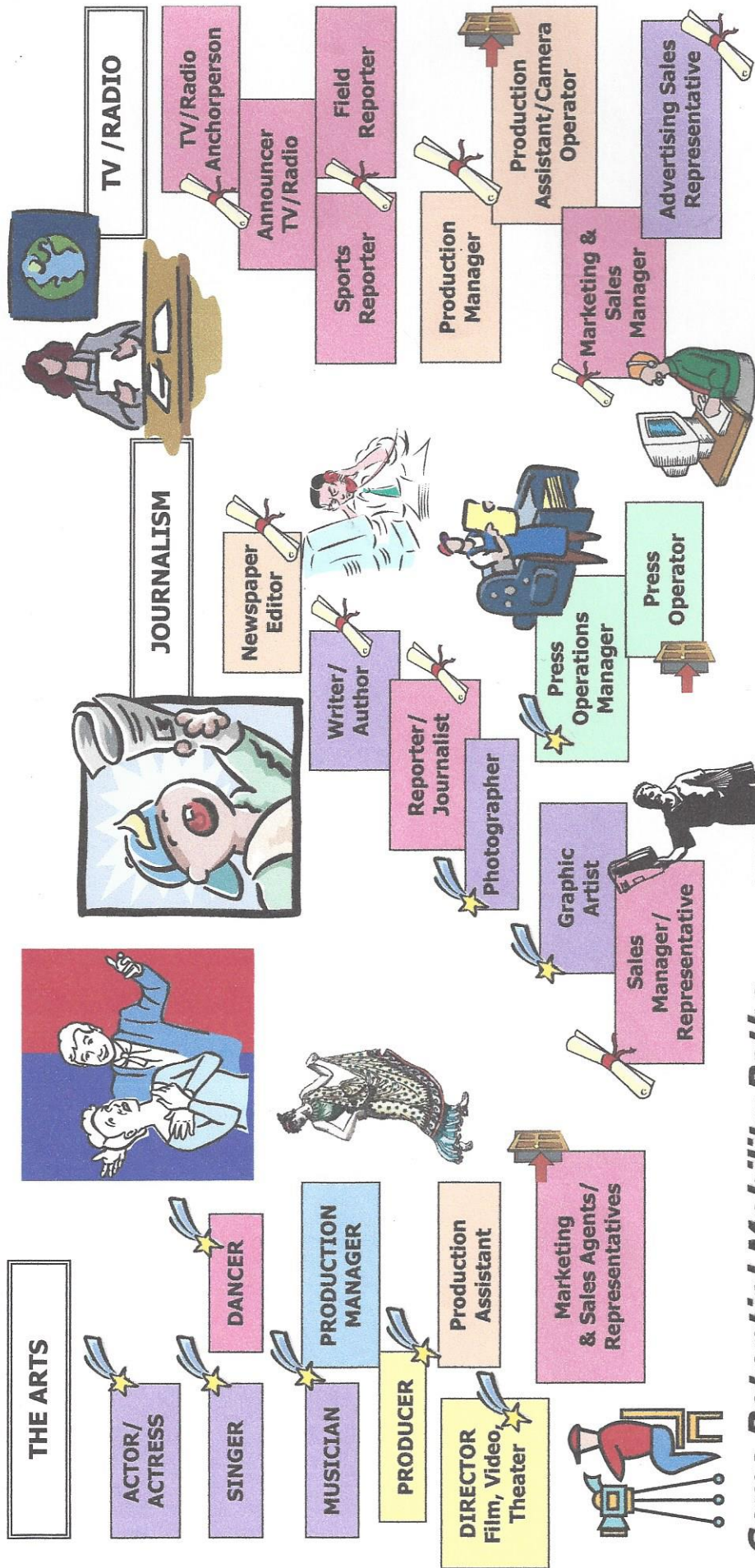
Shasta Twenty-first Century Career Connections

SFC

Shasta Twenty-first Century Career Connections

Shasta Twenty-first Century Career Connections

ARTS & COMMUNICATIONS ORGANIZATION CHART



Some Potential Mobility Paths



Shasta Twenty-first Century Career Connections

Career Interest Color Codes: **R** **I** **A** **S** **E** **C**

- = Entry Level
- = 4 or more years College/Univ. Degree
- = Career/Technical Training/Certification beyond High School