

DOR Student Services

Your guide toward employment, independence and a successful life



AGENDA

- DOR Overview
- WIOA & Pre-Employment Transition Services
- DOR Student Services
- DOR Student Services Counselors
- Transition Partnership Programs & We Can Work
- Connecting with DOR Student Services
- Questions



DOR Overview

Who is the Department of Rehabilitation?

- The California Department of Rehabilitation (DOR) administers the largest vocational rehabilitation and independent living programs in the country.
- DOR provides consultation, counseling, vocational rehabilitation, and works with community partners to assist the consumers we serve.

DOR Student Services

DOR provides students with disabilities valuable skills to propel on a path toward an independent and successful future. Students will have the opportunity to:

- Explore the world of work
- Get some hands-on experience
- Gain confidence
- Boost skills to be more successful at school, work, and in life

DOR Student Services

Our **goal** is for students with disabilities to:

- Be excited about career opportunities
- Be successful on the job
- Have the tools and resources to live independently



WIOA
&
Pre-Employment
Transition Services

Workforce Innovation & Opportunity Act (WIOA)

- Effective on July 22, 2014, WIOA re-authorized Title IV of the Rehabilitation Act of 1973 and requires DOR to collaborate with partner agencies. Final regulations were posted August 19th, 2016 and effective September 19th, 2016.
- WIOA defines youth with disabilities, ages 14-24, and students with disabilities, ages 16-21.
- WIOA requires DOR to provide transition coordination to students with disabilities, ages 16-21, through partnerships with schools, employers, local workforce development programs, regional centers, and other stakeholders to support transition activities.

WIOA Requirements

- Services provided to students with disabilities (SWD)
 - In a secondary, post-secondary or other recognized ed. program
 - ages 16 and not older than 21 years of age
 - Have an IEP (Individualized Education Program), 504 plan, or a disability
- DOR must expend 15% of its federal award on Pre-ETS
- Students in the DOR Potentially Eligible (PE) or VR Case Type

What are the five categories of services?



Job Exploration Counseling

- Learn about different kinds of jobs and which one is best for the student's strengths and interests through:
 - Interest inventories
 - Conversations,
 - Labor market research
- Discuss different kinds of work, including non-traditional employment options
- Identification of career pathways

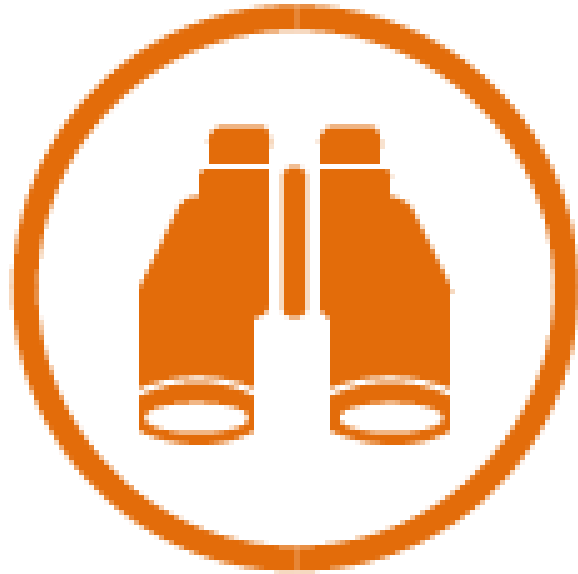


Work-based Learning Experiences

- Offers a variety of ways to connect with local professionals and get real-world work experience.
- May include in-school or after school opportunities, or experience outside the traditional school setting (including internships) that is provided in an integrated environment to the maximum extent possible
 - Job shadowing
 - Informational interviews
 - Paid/unpaid work experience
 - Paid/unpaid internships

Counseling on Post-Secondary Education

- Opportunities for enrollment in comprehensive transition or postsecondary educational programs at institutions of higher learning
- May include instruction in the following:
 - Explore career & post-secondary education options
 - Discover post-secondary education resources and disability support services
 - Assist with application/ enrollment process
 - Identify financial aid options





Workplace Readiness Training

- Develop work habits, interpersonal skills, and independent living skills to prepare for employment
- May include:
 - Soft skills needed for successful employment
 - Interviewing techniques
 - Resume development
 - Application preparation
 - Appropriate work behaviors
 - Travel training
 - Financial literacy



Instruction in Self-Advocacy

- Build leadership skills, gain confidence in professional environments
- May include:
 - Training in self-awareness
 - Disability understanding and disclosure
 - Understanding workplace rights
 - Peer mentoring



DOR Student Services

DOR Branding

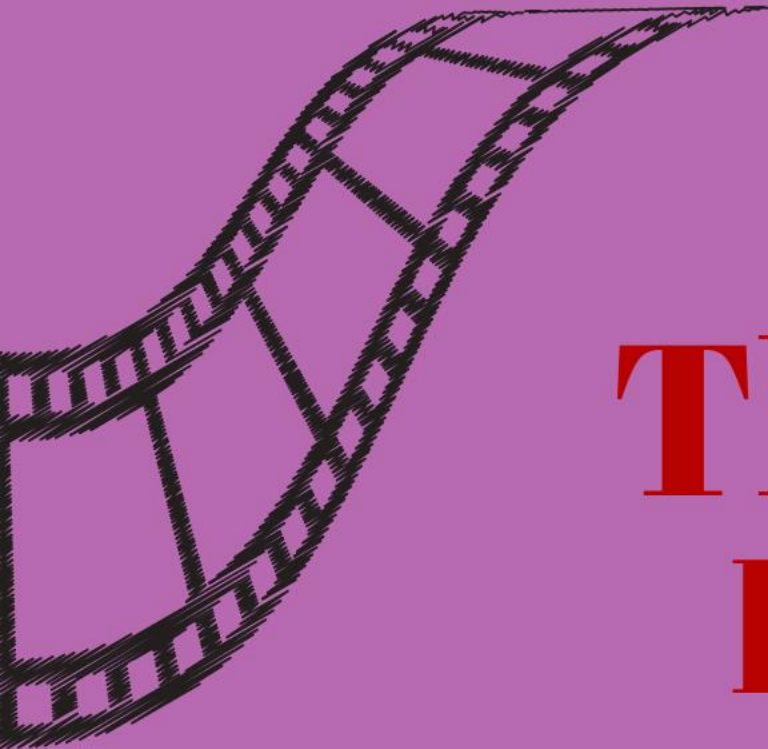
- WIOA requires DOR to provide Pre-Employment Transition Services
- DOR branded the 5 core services: “DOR Student Services” to be more relatable to the population being served
- DOR has rolled out several new initiatives to expand services to students

DOR Student Services Avenues

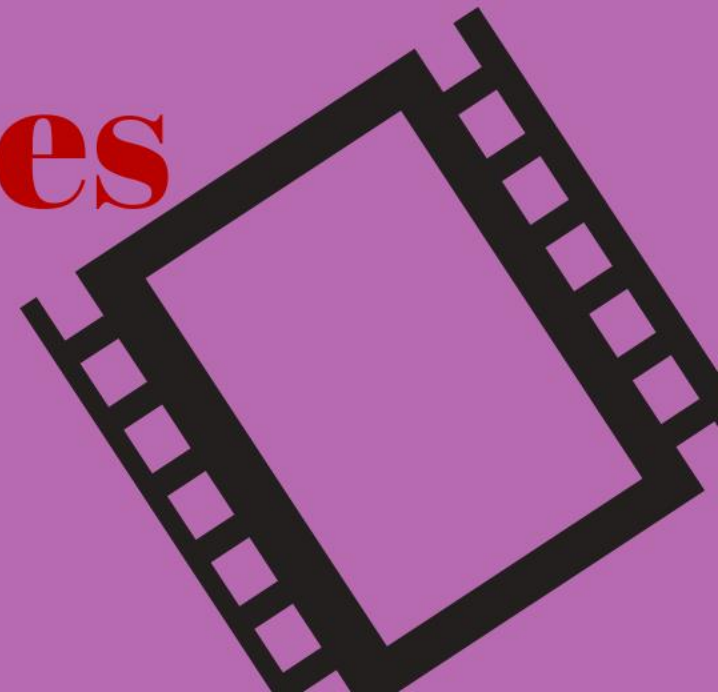
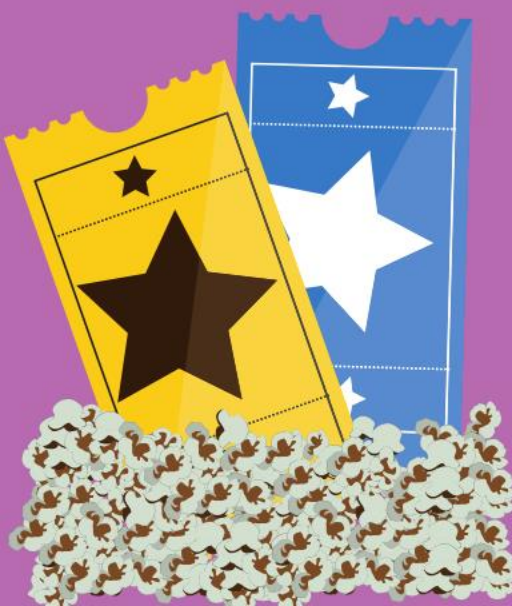
- DOR Student Services Counselors
- Transition Partnership Program
- We Can Work Programs – Specifically focused on Work Based Learning Experiences



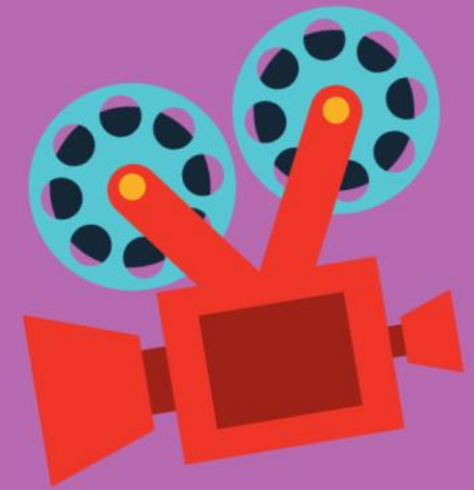
DOR Student
Services
Counselors



The 10 Things I Love About Student Services



The Cast & Crew



The Director



D.A. Robert Louen

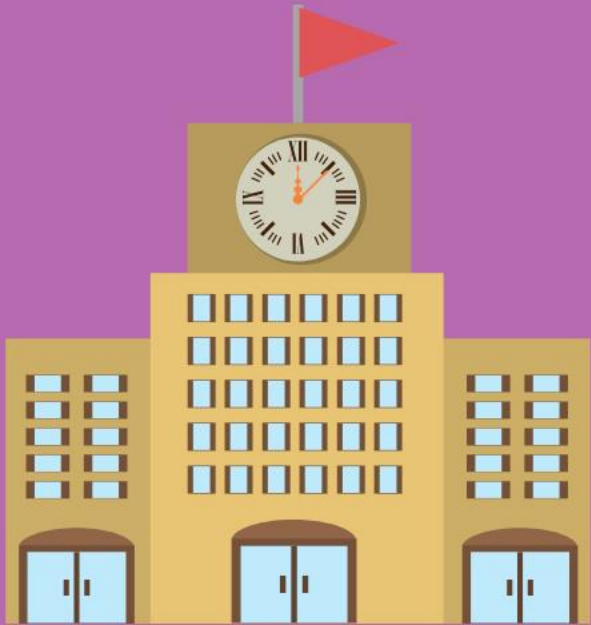
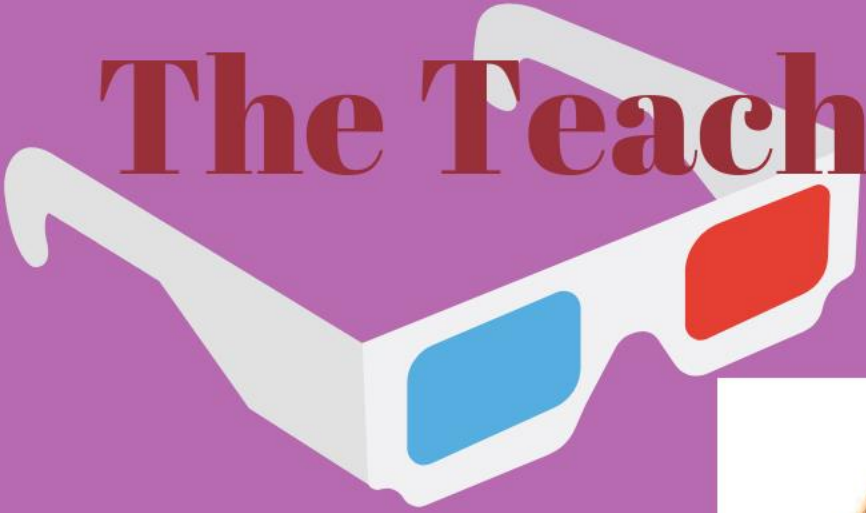


Mighty Inland Empire

The Awesome Students



The Teachers & Administrators



The Community Partners & Stakeholders



The Parents



The Businesses



Collaborative Trainings & Meetings



"Team Work Makes The Dream Work"





Student Success



Transition
Partnership
Programs (TPPs) &
We Can Works
(WCWs)

Transition Partnership Program (TPP)

- Cooperative contractual agreement between the education agency and DOR
- Opportunity to develop coordinated vocational services for students with disabilities
- Shared staffing and resources
- Education agency provides match funding that Supports Federal Funding from DOR

TPP Services

- DOR Student Services
 - Job Exploration Counseling
 - Workplace Readiness Training
 - Work-based Learning Experiences
 - Instruction in Self-Advocacy
 - Counseling on Post-Secondary Education
- Vocational Rehabilitation (VR) Services
 - Job Development, Placement & Follow-up
 - Short Term Supports Service

New TPP Program Designs

As TPP contracts renew, each TPP will select 1 of 2 new program designs:

- Design Option 1
 - **DOR Student Services** *only* (PE or VR Case Type)
- Design Option 2
 - **DOR Student Services** through one service budget (PE or VR Case Type)
 - **VR Employment Services** through another service budget (VR Case Type)

PE Case Type is predominant service delivery method.

We Can Work

- Contractual agreement between the education agency and DOR
- Provides an opportunity to fund Work Based Learning Experiences - only
- Students would receive additional DOR Student Services through DOR Counselors or other DOR service providers
- Developed to create additional DOR student services resources
- No match required



Connecting with DOR Student Services

Getting Started is Simple



www.dor.ca.gov

DOR DEPARTMENT of
REHABILITATION
Employment, Independence & Equality

Connect with us and prepare for your future today

Call your local [DOR office](#), or send an email to the Youth Services Inbox at YouthServices@dor.ca.gov



Any Questions?

Thank you 😊